



ProTech® Chill (NFC & SFC) For A More Sustainable You

What is ProTech® For A More Sustainable You?

A functional finish brand that consists of plant-based, innovative, and ethical technologies that empower product development and strategy while also providing the ability for consumers to be more sustainable in how they use and maintain the products that they know and love.

Who is involved with our technology brand?

 ProTech® For A More Sustainable You is owned and managed by SANITIZED (USA) Inc. and our products are globally available through our Co-Producer Network. Each Co-Producer is strategically located around the world to provide technical and marketing support. Services provided by our Co-Producers are in English and in the local language.

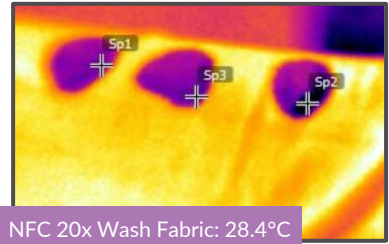
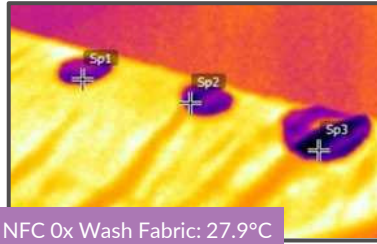
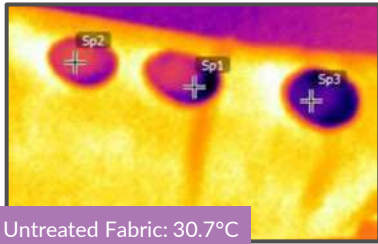
What is NFC & SFC?

They are moisture-activated cooling technologies. The cooling performance occurs through an endothermic reaction – when moisture, such as sweat, is absorbed into the fabric. The effect is immediate and can achieve up to 3°C of cooling. NFC is specifically designed for 100% cotton and cotton-rich fabrics. While SFC is specifically designed for 100% polyester and polyester-rich fabrics.

We take the utmost care in validating and utilizing the best materials, systems, and procedures for the sourcing, processing, and manufacturing for each of our technologies.

- ✓ Rapid Cooling
- ✓ Moisture Activated
- ✓ Endothermic
- ✓ Metal Free
- ✓ Particle Free
- ✓ 20 HL Durability
- ✓ High Compatibility
- ✓ Easy Application
- ✓ Cost Effective

How does NFC & SFC function?




When moisture is absorbed into the fabric, it provides an immediate cooling effect that is caused through an endothermic reaction.

The cooling effect dissipates when overheating and sweating have stopped and once the body temperature has returned to normal, leaving a cool sensation.

Suitable Applications

- Fiber-Types
 - 100% Cotton (NFC)
 - Cotton-rich Fabrics (NFC)
 - 100% Polyester (SFC)
 - Polyester-rich Fabrics (SFC)
- Application Methods
 - Padding
 - Exhaust
- Category Uses
 - Active
 - Outdoor
 - Casual
 - Innerwear
 - Home Textiles

Marketing & Hang Tags

Products utilizing our technologies are eligible to use our branding material,  ProTecht® For A More Sustainable You

Additionally, our in-house marketing team provides assistance with brand positioning, claim language, and POS materials such as custom hang tags.



Testing Method

We utilize an infrared testing method that is under official development in accordance with, and guidance from, standards and testing organizations. Q-Max test is also supported.



Global Compliance

- ✓ Oeko-Tex Eco Passport
- ✓ ZDHC Level 3
- ✓ GOTS
- ✓ Bluesign (In-Process)

Contact Us

For more information, contact us at: service@myprotecht.com

Learn more by visiting our website at: www.myprotecht.com